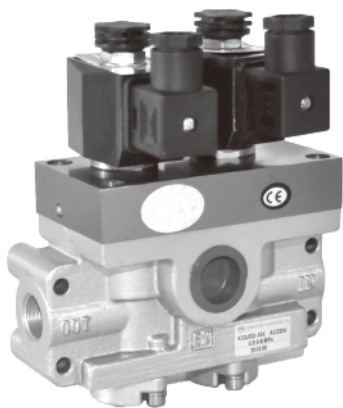


# K23JSD 系列 双联安全阀

Series Double Valve

## K23JSD-L15X 双联安全阀

Double Valve

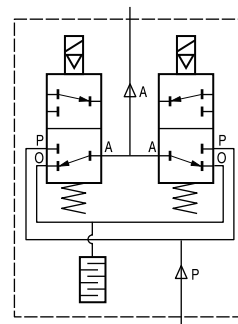


### 产品特点 Features

本产品为双联平行流动型安全控制阀，当一个阀发生故障时，由于排气气路的截面积大于供气气路的截面积，OUT侧的压力比离合器或制动器的动作压力要低，因此冲压机不动作。比单用一个电磁阀配置于冲压机械的安全系数高。

K23JSD-L15X is the parallel flow double safe valve . When one of the valve goes wrong as the "OUT" side's air pressure is higher than clutch's and breaker's , the press machine will stop runing .It makes the press machine more safe than those that only have one single solenoid valve.

### 图形符号 symbols



### 型号注释 Order Code

**K 23 J S D - L 15 X**

空气介质 Medium :air

二位三通 3/2 ways

截止式 shut-off type

双联阀 double valve

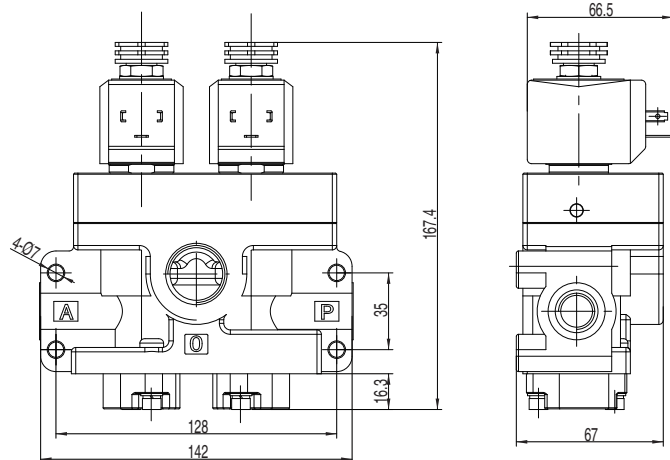
电控 pilot solenoid

管接式 line mounting

公称通径 dia

系列编制 code No.

### 外形尺寸 Outlook & Dimension



### 技术参数 Specification

型号 type	K23JSD-L15X	
参数 parameters		
公称通径 Dia (mm)	15	
接管螺纹 port size	IN	G1/2
	OUT	G1/2
	EXH	G3/4
工作压力范围 Range of working pressure (MPa)	0.3-0.8	
工作温度 Working temperature (°C)	-5-50	
换向时间 Direction changing Time (sec)	≤0.07	
有效截面积 Effective sectional area Cv(mm²)	IN OUT	29(1.6)
	OUT IN	172(9.3)